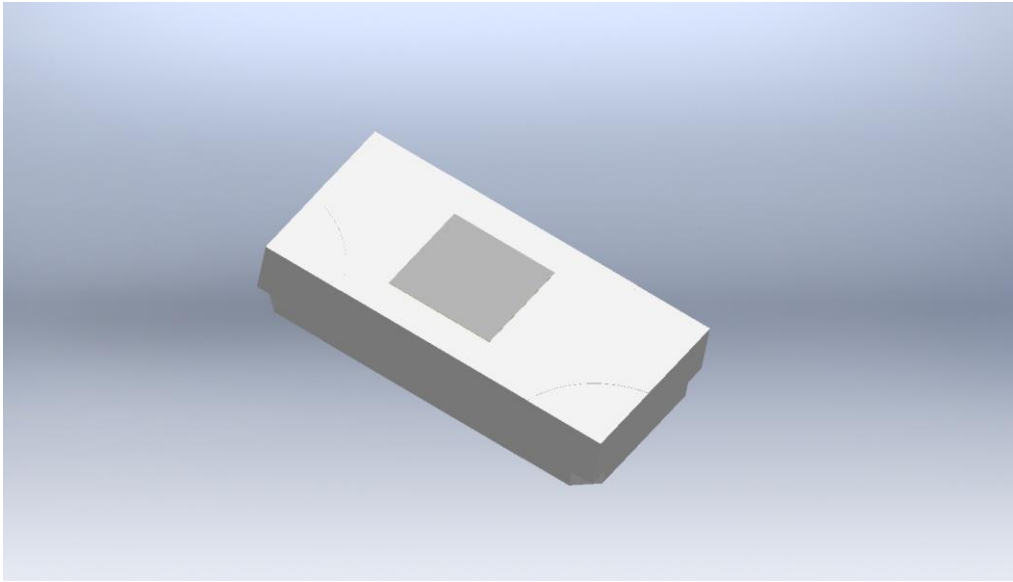


### SML-LX0201 Series, Smallest Surface Mount LED

ITW ECS Lumex announces the release of the smallest Surface Mount LED. With the package size of 0.65X0.36mm, these LEDs can be used for almost any indication in tight spaces.

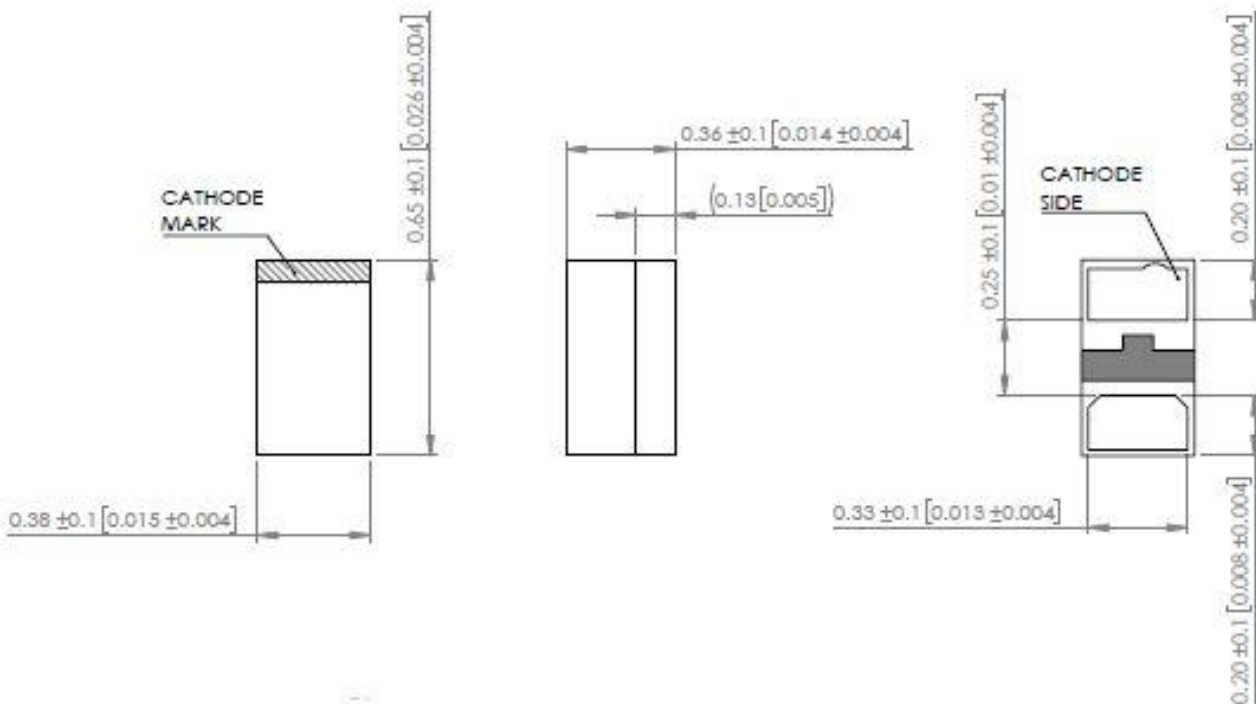


<b>Product Features</b>	<b>Benefits</b>
Very small footprint	50% size reduction from smallest LED in market
Surface Mount	Offers assembly savings of up to 25%
Tape reel packaging	Easy mounting with pick and place process
Standard single colors	Colors available in white, green and blue. Inquire for other colors
Increased intensity of 50% compared to other LEDs	Greater visibility and clarity
Low current	Power saving

**SML-LX0201 Series, Smallest Surface Mount LED**

***Technical Information & Drawing***

PN	Emitted Color	Chip Material	Peak Wavelength (nm)	Lens Type	Typ. Vf	Intensity Typ. (mcd)	View Angle 2xTheta	If (mA)
SML-LX0201NWD-TR	White	InGaN	-	Clear	2.8	60	110	2
SML-LX0201USBC-TR	Blue	InGaN	465	Clear	2.6	15	110	2
SML-LX0201UPGC-TR	Green	InGaN	520	Clear	2.7	100	110	2



**SML-LX0201 Series, Smallest Surface Mount LED**

Markets	Applications
<ul style="list-style-type: none"> <li>▪ Medical</li> <li>▪ Telecommunications</li> <li>▪ Industrial Controls</li> <li>▪ Appliance</li> <li>▪ Security</li> <li>▪ Wearables</li> <li>▪ Transportation</li> </ul>	<ul style="list-style-type: none"> <li>▪ Portable medical diagnostics</li> <li>▪ Routers, Switches, Indications</li> <li>▪ Indications, controls &amp; switches</li> <li>▪ User-interface, switches</li> <li>▪ Switches &amp; indications</li> <li>▪ Indication, user-interface</li> <li>▪ Switches &amp; indications</li> </ul>

